



WEST MIDLANDS EDUCATION & SKILLS

ADMISSIONS POLICY

## **Introduction**

West Midlands Education and Skills is an Independent School which caters for young people who require any of the following educational services:

- alternative provision - for those who are not suited to mainstream provision;
- one to one mentoring;

## **Aims and objectives**

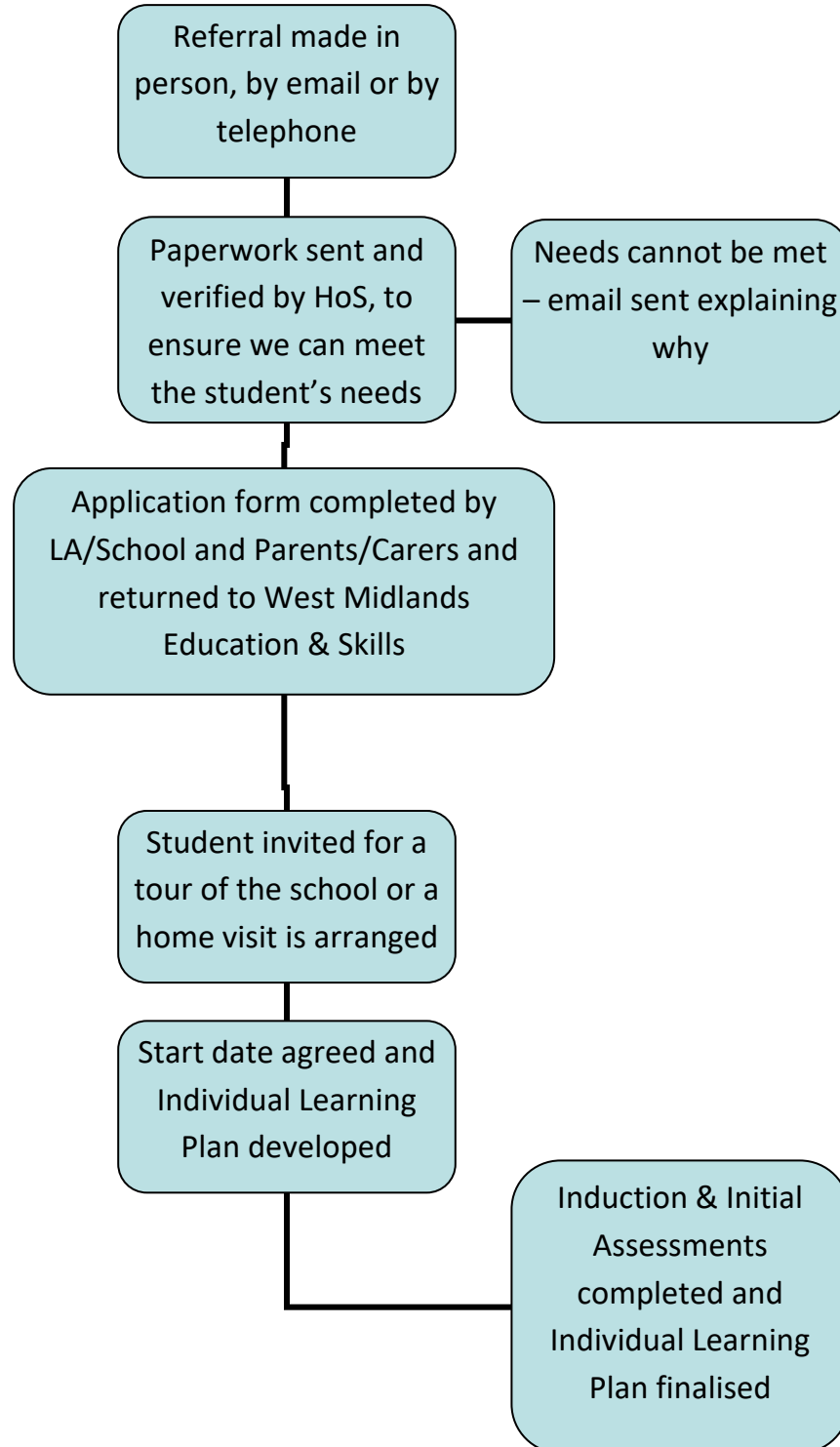
### **Our aims**

West Midlands Education & Skills seeks to ensure that all those young people who are admitted to the school will thrive in an environment of support, benefit from the rounded education provided and be happy within the school community. We recognise our duty to embrace diversity and to work to overcome prejudice. We do not discriminate on grounds of diversity, gender, race, religion or sexual orientation.

### **Our objectives**

- help each young person discover, develop and realise their full potential;
- build empowering and enabling relationships with young people;
- support young people to set and achieve goals;
- re - engage those disaffected and disengaged from mainstream life;
- equip young people with life, independent living and employability skills;
- help young people obtain nationally recognised certificates as a gateway to other further education, vocational and employment opportunities;
- reintegrate back into mainstream school.

## Admissions procedure



West Midlands Education & Skills will arrange tours and meetings with parents of prospective students to discuss the school, and if applicable, any worries they may have.

We admit students at any time not just at the beginning of a school term.

West Midlands Education & Skills train staff to help with the inclusion of any child in the school.

We always assess every student on entry, this enables us to develop an individual learning plan for that individual student.

The Head of School has the right and requires parents/carers to support all disciplinary procedures employed by the school if their child or their behaviour during school activities brings the school into disrepute or interferes with the safety or progress of another child.

## **Curriculum**

The curriculum is designed to support the school's aims and objectives and is delivered in conjunction with a varied and bespoke student support package. This tailored approach aims to engage students by helping them to overcome barriers to learning and encourages a discovery and development of talents and skills and a fulfilment of potential.

## **Eligibility**

### Alternative Provision/One to One Mentoring/Vocational provision

Young people are eligible to join our school if:

- they are 9 - 25 years
- they are referred by an Agency\*

\*Agencies - the local education authority (LEA), schools, Alternative Provision Directories and The Special Educational Needs Assessment and Review (SENAR).

## **Transition arrangements**

Once a place is agreed, West Midlands Education & Skills will work with the young person, their parents/guardians/carers and their current school to enable a smooth and successful transition.

**If prospective parents are dissatisfied with an admission decision they should refer to the school's complaints procedure.**